

FOR SALE



**PEARSON
REALTY**

AGRICULTURAL PROPERTIES
A Tradition in Trust Since 1919

Alta Vista Gin



**39.71± Assessed Acres
Fresno County, California**

**Exclusively Presented By:
Pearson Realty**

- Potential Headquarters Site
- Dry Storage Buildings
- Good Access to I-5



CALIFORNIA'S LARGEST AG BROKERAGE FIRM

www.pearsonrealty.com

CA BRE #00020875



Alta Vista Gin

39.71± Assessed Acres

\$600,000

LOCATION:

The NEC of Lincoln and San Diego Avenues, approximately 7± miles south-west of the City of Mendota (Address: 5854 S. San Diego Avenue, Mendota, CA 93640).

LEGAL:

39.71± assessed acres located in the SW 1/4 of the SW 1/4 of Section 3, T15S, R14E, M.D.B.&M.
Fresno County APN's: 028-130-12s & 46s.

ZONING:

AE-20 (Agricultural Exclusive 20 acre minimum parcel size).

**BUILDINGS/
IMPROVEMENTS:**

Office: The office contains 1,860± sq. ft., including its attached scale house. Construction consists of a wood frame, concrete foundation, stucco siding and a shingle roof. There is a 70' truck scale located along its west side.
Cotton Gin Building: The cotton gin facility is constructed of a rigid steel frame with corrugated metal siding and roof over a reinforced concrete slab foundation. The structure was built in 1952 and contains a total of 9,159± sq. ft.
Seed Storage Building: The 18,369± sq. ft. facility has a concrete foundation and side constructed building with a metal roof.
Module Cover: The module feed cover is a 9,600± sq. ft. steel frame structure constructed with a dirt and concrete foundation, partial metal siding on two sides and a metal roof.
Shop: The storage building is a 3,510± sq. ft. steel frame structure constructed with a concrete foundation, metal siding and a metal roof.
Other Out-Buildings: Two older employee houses, a small chemical shed and garage.

**SITE
IMPROVEMENTS:**

1,600 amp service, 70' truck scale, chain link fencing and an open cotton seed storage slab.

EQUIPMENT:

None.

WATER:

(1) Domestic well and pressure tank.

SOILS:

Ciervo, wet-Ciervo complex, saline-sodic, 0-1% slopes
Calflax clay loam, saline-sodic wet, 0-2% slopes

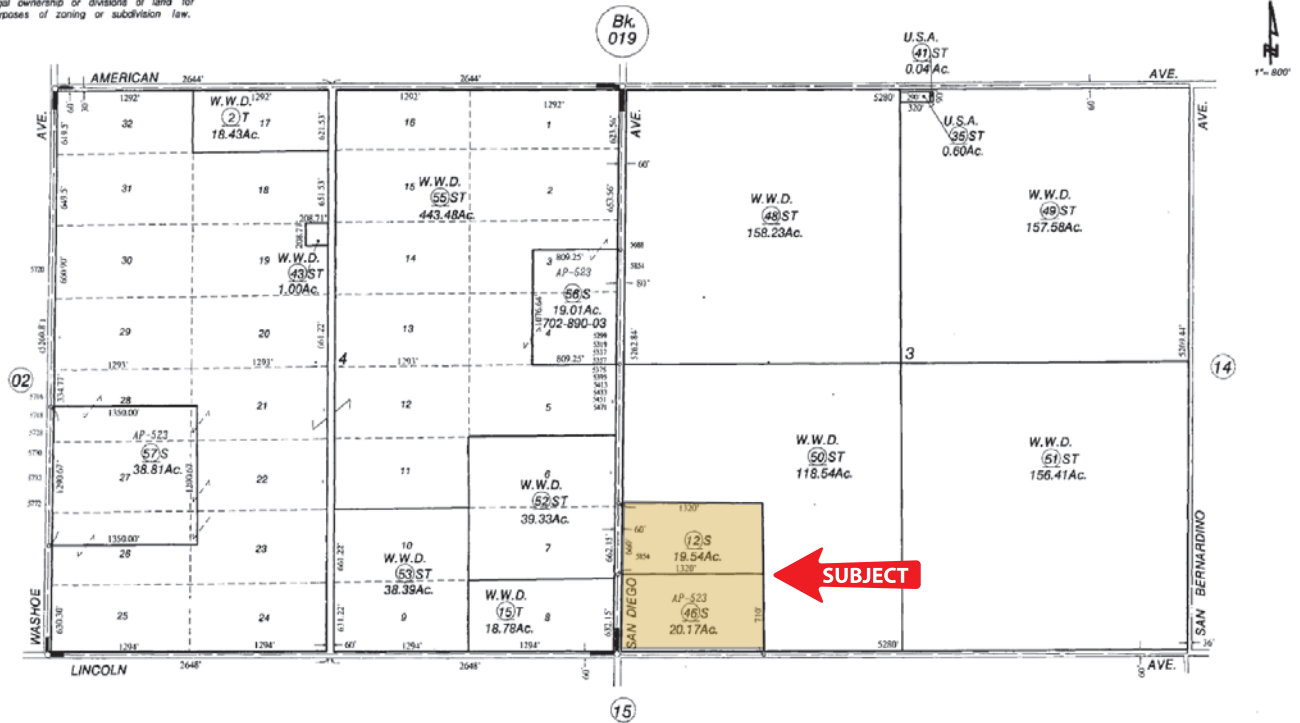
ASSESSOR'S PARCEL MAP

--- NOTE ---
This map is for Assessment purposes only.
It is not to be construed as portraying
legal ownership or divisions of land for
purposes of zoning or subdivision law.

SUBDIVIDED LAND IN SEC'S. 3 & 4, T. 15 S., R. 14 E., M.D.B. & M.

Tax Rate Area
140-096

028-13



Agricultural Preserve
California Land Investment Co. Tract No. 1 - R.S. Bk. 7, Pg. 8

Assessor's Map Bk. 028 - Pg. 13
County of Fresno, Calif.

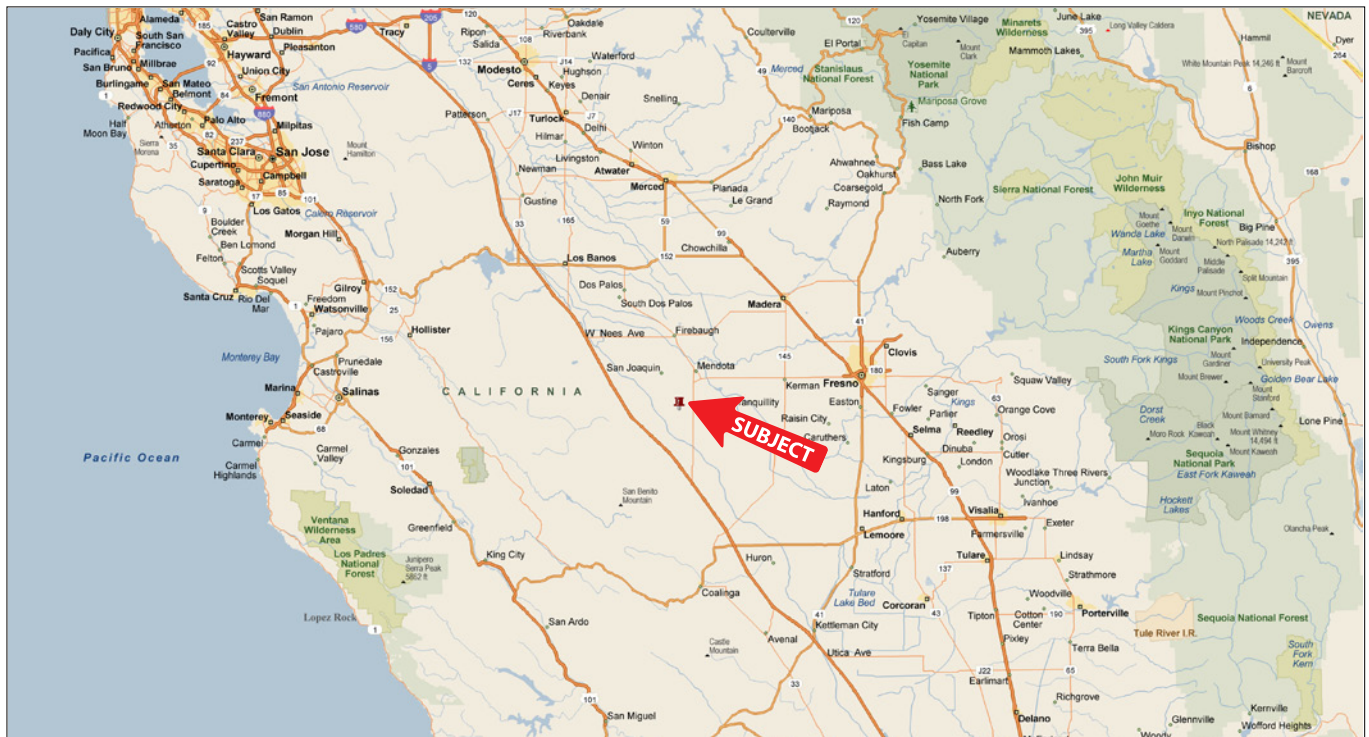
AERIAL MAP



LOCATION MAP



REGIONAL MAP



We believe the information contained herein to be correct. It is obtained from sources which we regard as reliable, but we assume no liability for errors or omissions. Policy on cooperation: All real estate licensees are invited to offer this property to prospective buyers. Do not offer to other agents without prior approval.

Offices Serving The Central Valley

FRESNO

7480 N Palm Ave, Ste 101
Fresno, CA 93711
559.432.6200

VISALIA

3447 S Demaree Street
Visalia, CA 93277
559.732.7300

BAKERSFIELD

1801 Oak Street, Ste 159
Bakersfield, CA 93301
661.334.2777



**Download Our
Mobile App!**

<http://snap.vu/oue>

Download on the
App Store

GET IT ON
Google Play