

RESIDENTIAL LAND AVAILABLE FOR SALE

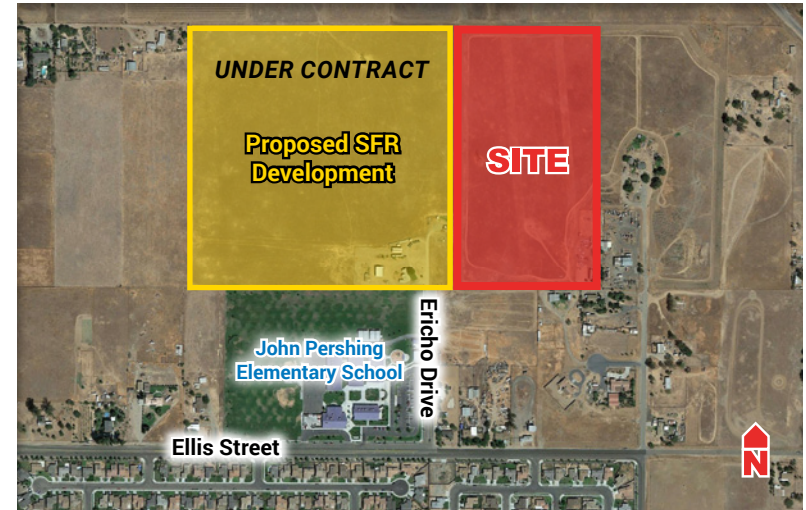
NEC Ericho Drive & Ellis Street - Madera, California



20± ACRES

Price: \$1,390,000 (\$69,500/acre)

Located just north of Ericho Drive and Ellis Street



HIGHLIGHTS

- ◆ Substantial growth and development at HWY 99 and Ave 17
- ◆ New High School and Middle School within 1^{1/2} miles of property
- ◆ Within Madera Sphere of Influence
- ◆ John Pershing Elementary School is within walking distance

Jeff Wolpert

Senior Vice President - Land Division
Newmark Pearson Commercial
559.447.6295 - jwolpert@pearsonrealty.com
CA DRE #01487371

Bill Enns

Senior Vice President - Farm Land Division
Pearson Realty
559.447.6238 - benns@pearsonrealty.com
CA DRE #01335282

For Additional Information Please Contact:



FRESNO OFFICE 7480 N Palm Ave #101, Fresno CA 93711 559.432.6200
VISALIA OFFICE 3447 S Demaree St, Visalia CA 93277 559.732.7300

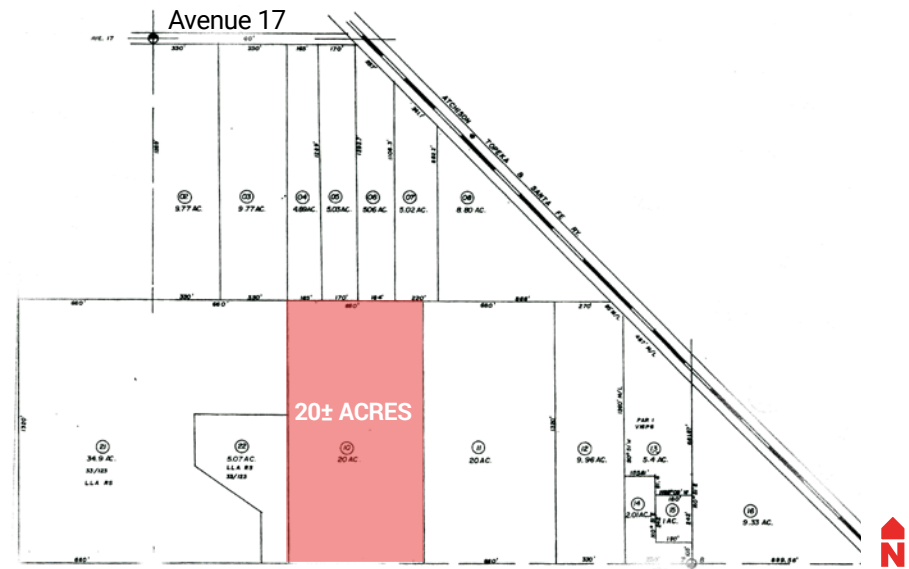
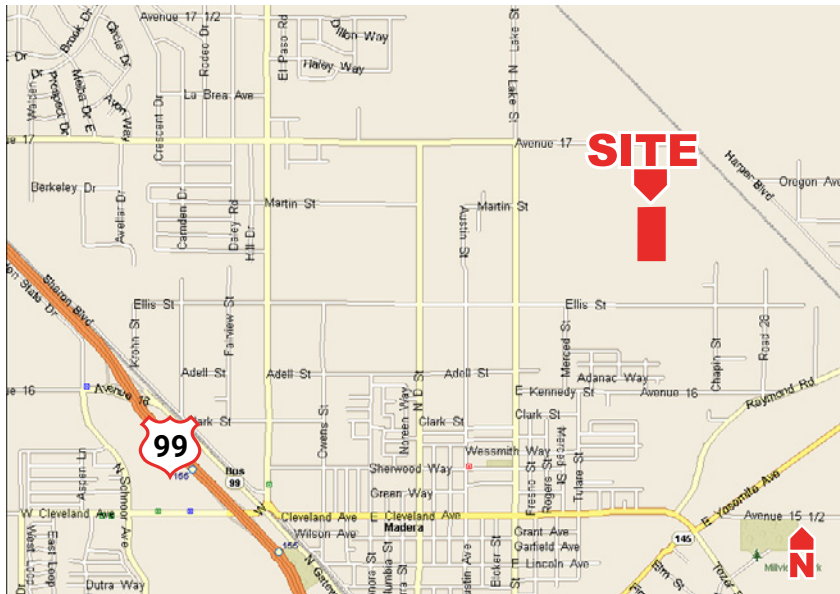
Independently Owned and Operated
www.pearsonrealty.com | www.newmarkpearson.com

Procuring broker shall only be entitled to a commission, calculated in accordance with the rates approved by our principal only if such procuring broker executes a brokerage agreement acceptable to us and our principal and the conditions as set forth in the brokerage agreement are fully and unconditionally satisfied. Although all information furnished regarding property for sale, rental, or financing is from sources deemed reliable, such information has not been verified and no express representation is made nor is any to be implied as to the accuracy thereof and it is submitted subject to errors, omissions, change of price, rental or other conditions, prior sale, lease or financing, or withdrawal without notice and to any special conditions imposed by our principal.

NEC ERICHO DRIVE & ELLIS STREET - MADERA, CA

AVAILABLE FOR SALE

LOCATION MAP AND ASSESSOR'S PARCEL MAP



For Additional Information Please Contact:

Jeff Wolpert
 Newmark Pearson Commercial
 Senior Vice President - Land Division
 559.447.6295 - jwolpert@pearsonrealty.com
 CA DRE #01487371

Bill Enns
 Pearson Realty
 Senior Vice President - Farm Land Division
 559.447.6238 - benns@pearsonrealty.com
 CA DRE #01335282



FRESNO OFFICE 7480 N Palm Ave #101, Fresno CA 93711 559.432.6200
 VISALIA OFFICE 3447 S Demaree St, Visalia CA 93277 559.732.7300

Independently Owned and Operated
www.pearsonrealty.com | www.newmarkpearson.com

Procuring broker shall only be entitled to a commission, calculated in accordance with the rates approved by our principal only if such procuring broker executes a brokerage agreement acceptable to us and our principal and the conditions as set forth in the brokerage agreement are fully and unconditionally satisfied. Although all information furnished regarding property for sale, rental, or financing is from sources deemed reliable, such information has not been verified and no express representation is made nor is any to be implied as to the accuracy thereof and it is submitted subject to errors, omissions, change of price, rental or other conditions, prior sale, lease or financing, or withdrawal without notice and to any special conditions imposed by our principal.