

WATERFORD ALMONDS

Stanislaus County, California

473.95± Acres

\$7,559,502
(\$15,950/Acre)

PRICE REDUCED



- Large Block of Almonds • Equipment & Maintenance Shop • O.I.D Water District
- Newly Planted & Mature Almonds • Multiple Deep Wells



**PEARSON
REALTY**
AGRICULTURAL PROPERTIES
A Tradition in Trust Since 1919

Offices Serving The Central Valley

FRESNO

7480 N. Palm Ave, Ste 101
Fresno, CA 93711
559.432.6200

VISALIA

3447 S. Demaree Street
Visalia, CA 93277
559.732.7300

BAKERSFIELD

4900 California Ave., #210B
Bakersfield, CA 93309
661.334.2777

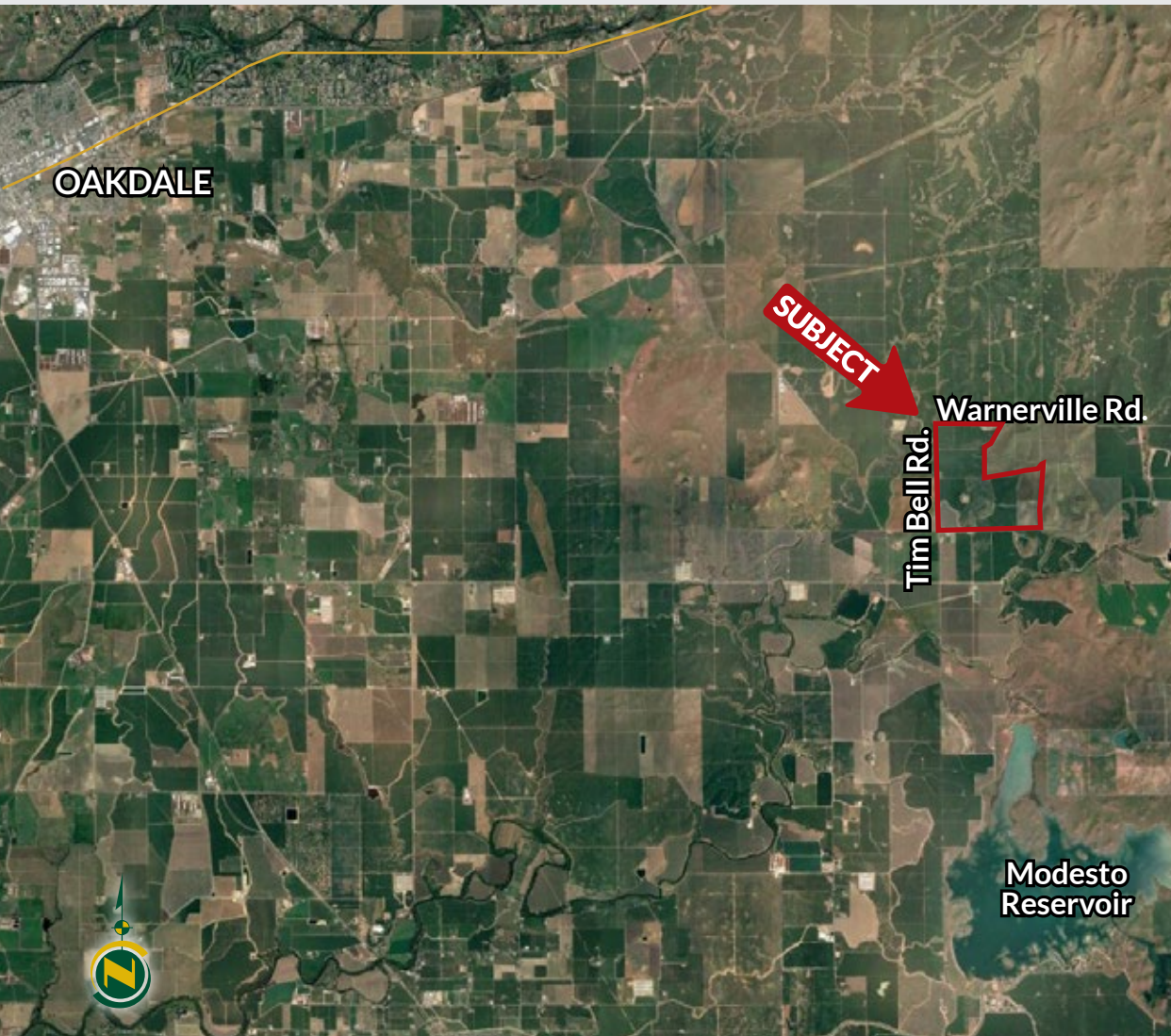
www.pearsonrealty.com

Exclusively Presented by:



PROPERTY LOCATION

From Oakdale, California travel south on Albers Road to Warnerville Road and then west for 6± miles. The subject property is located south of Warnerville Road and east of Tim Bell Road. The property is approximately 7 ½ miles east of the city of Oakdale.



WATERFORD ALMONDS

473.95± Acres
Stanislaus County, CA



PROPERTY INFORMATION

DESCRIPTION: An exclusive opportunity to purchase a quality almond orchard located in Stanislaus County. The property consists of newly planted almonds and mature almonds. Property consists of 6 separate parcels. There are 2 large shops for equipment and maintenance with a storage yard. The subject property has access to district water, 2 large pond basins and multiple deep wells.

LEGAL: Stanislaus County APN's: 011-005-047, 048, 049, 050, 051 and 052 Located in portions of Sections 28, 29, 30, 31, 32 and 33, T2S, R12E, M.D.B.&M.

WATER:

Fringe Tier 1 parcels:

APN: 010-005-049, 27.14 acres in-District, 75.65 gross

APN: 011-005-050, 5.82 acres in-District, 80.12 gross

APN: 011-005-051, 28.8 acres in-District, 80.06 gross

APN: 011-005-052, 22.1 acres in-District, 81.05 gross

Out of O.I.D. district parcels:

APN: 011-005-047, 77.54 gross acres

APN: 011-005-048, 79.53 gross acres

Refer to water legend on page 4 for pump and well locations.

Please contact agent for water details regarding Oakdale I.D. water deliveries.

IMPROVEMENTS/INFRASTRUCTURE: 2 very large shops for equipment and maintenance. One of the buildings has living quarters and an office above. Potential hilltop home site on property.

PRICE/TERMS: \$7,559,502 (\$15,950/acre) cash at the close of escrow. Buyer to reimburse Seller for cultural cost incurred towards the 2025 almond crop.

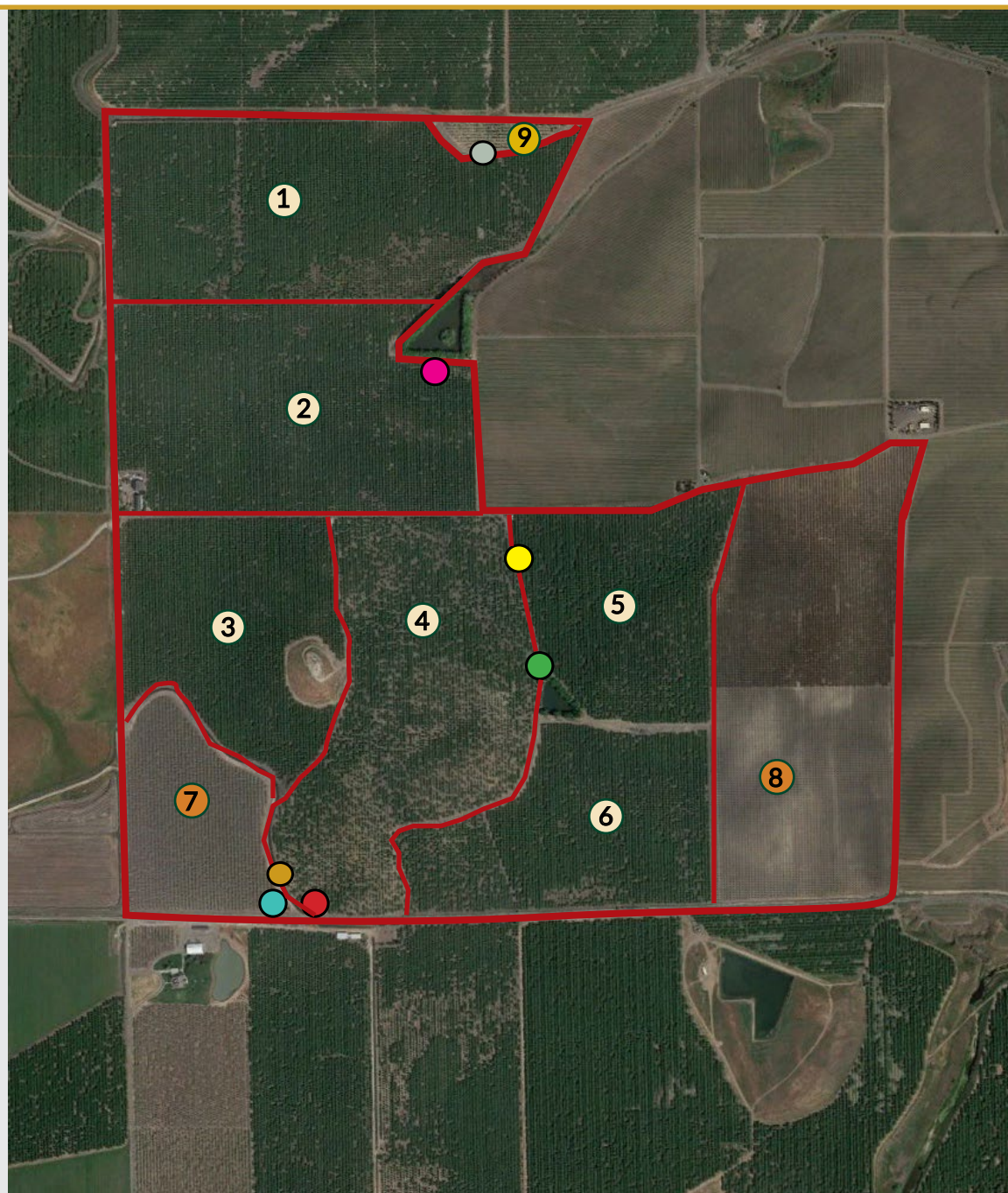


PLANTINGS / WELLS

- ① 75± Acs. Nonpareil, Sonora, Price
- ② 70± Acs. Nonpareil, Monterey, Fritz
- ③ 42± Acs. Nonpareil, Monterey, Carmel
- BLOCKS 4, 5 & 6 - 149± Open ground ready to plant
- ④ 76± Acs. OPEN GROUND READY TO PLANT
- ⑤ 38± Acs. OPEN GROUND READY TO PLANT
- ⑥ 35± Acs. OPEN GROUND READY TO PLANT
- BLOCKS 7 & 8 - 105± planted acs. almonds
- ⑦ 25± Acs. Independence, planted 2023
- ⑧ 80± Acs. Independence, planted 2021
- BLOCK 9 - Planted to Cherries
- ⑨ 7± Acs. Cherries

WATER LEGEND

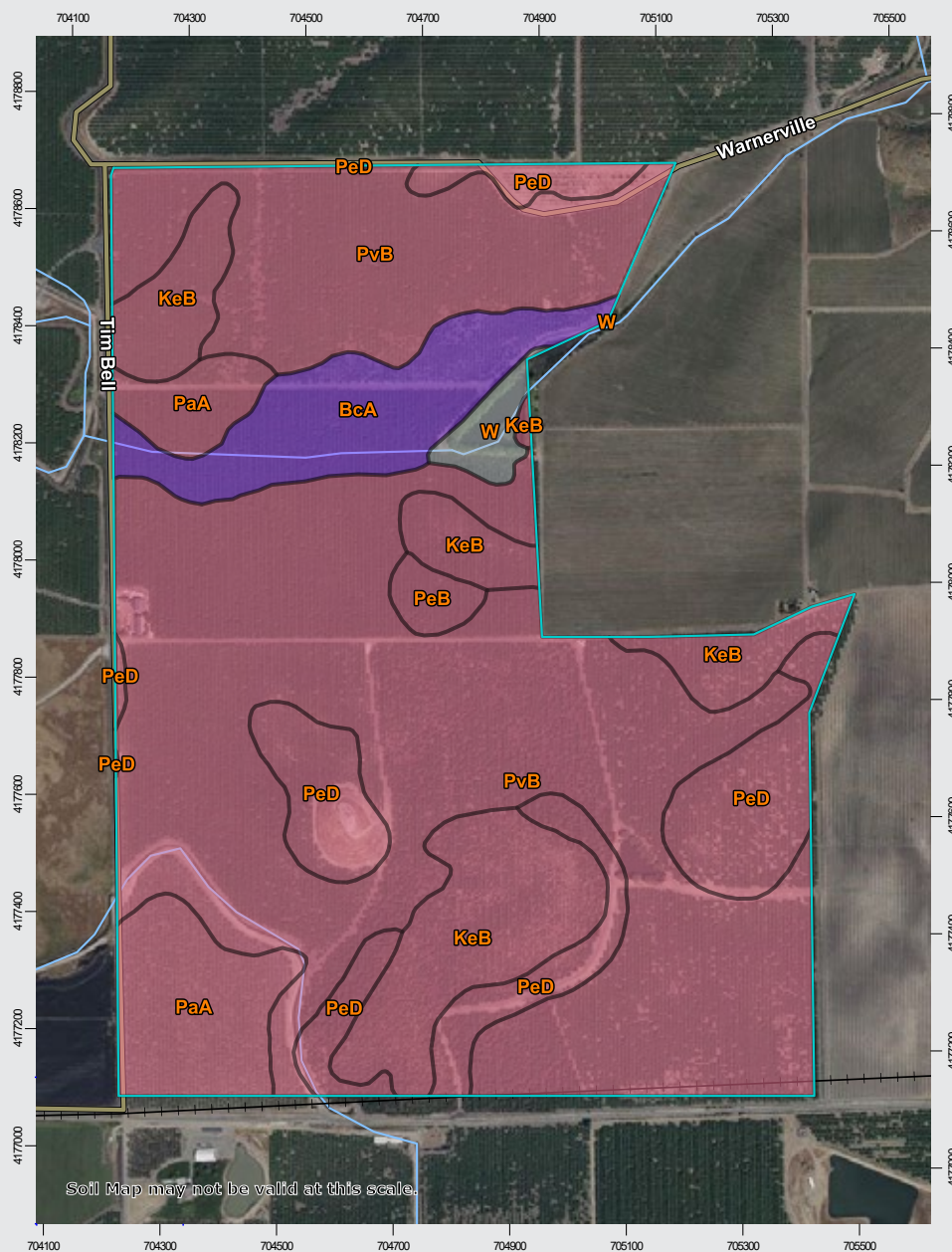
- (1) 150 HP Diesel
- (2) 200 Hp Electric (Well/Irrigation)
- (3) 200 HP Electric
- (4) 40 HP Irrigation
- (5) 100 HP Electric (Well/Irrigation)
- (6) 60 HP Lift Pump
- (7) 150 HP Diesel (Well/Irrigation)



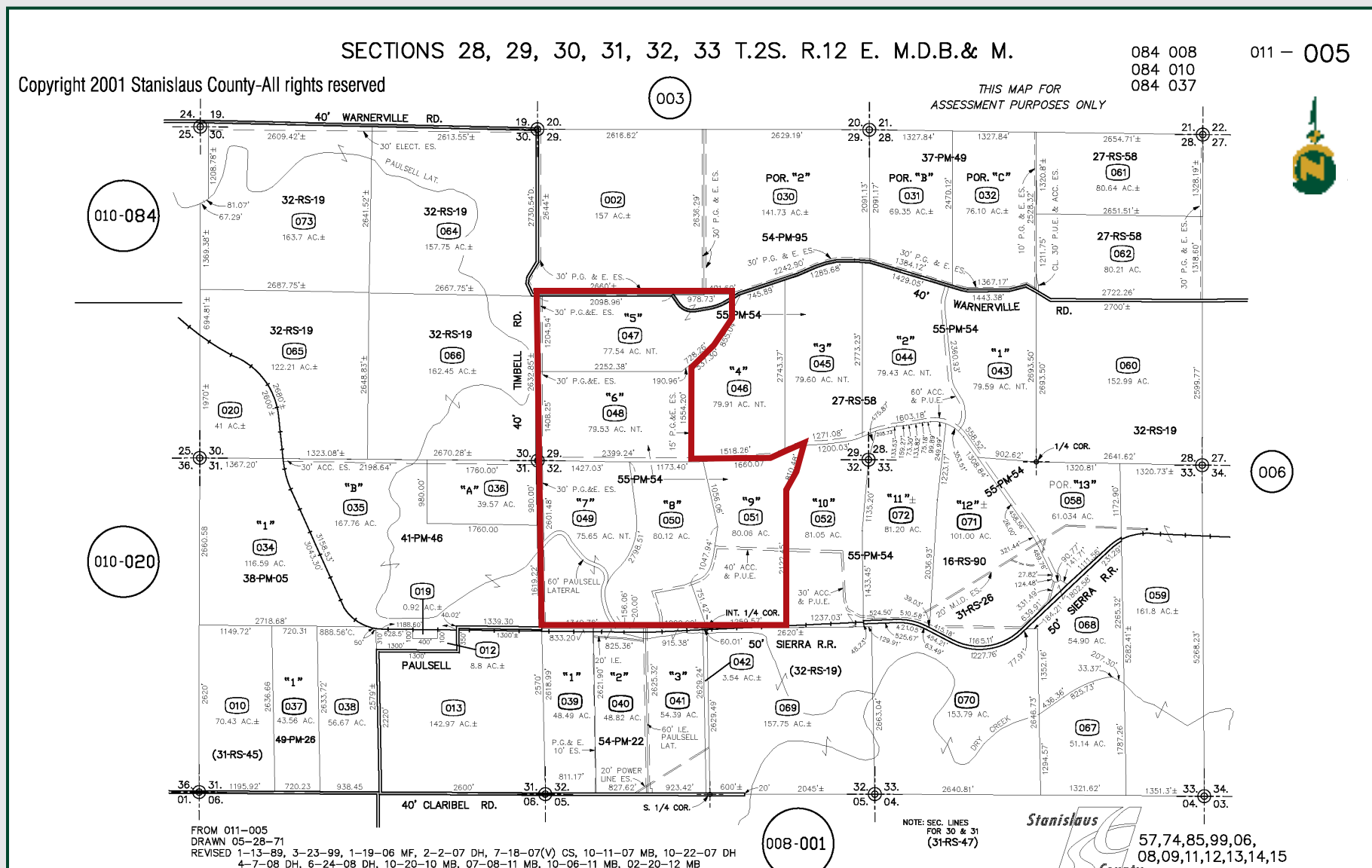
SOILS MAP

LEGEND

Map unit symbol	Map unit name
BcA	Bear Creek clay loam, 0-3% slopes
KeB	Keyes cobbly clay loam, 0-8% slopes
PaA	Paulsell clay
PeB	Pentz gravelly loam, 3-8% slopes
PeD	Pentz Gravelly loam, 8-30% slopes
PvB	Peters cobbly clay, 0-8% slopes
PxB	Peters-Pentz complex



PARCEL MAP



WATERFORD ALMONDS

473.95± Acres
Stanislaus County, CA



PROPERTY PHOTOS



WATERFORD ALMONDS

473.95± Acres
Stanislaus County, CA



Offices Serving The Central Valley

FRESNO

7480 N. Palm Ave, Ste 101
Fresno, CA 93711
559.432.6200

VISALIA

3447 S. Demaree Street
Visalia, CA 93277
559.732.7300

BAKERSFIELD

4900 California Ave., #210B
Bakersfield, CA 93309
661.334.2777



www.pearsonrealty.com

DRE# 00020875



**Download Our
Mobile App!**

<http://pearsonrealty.com/mobileapp>



Water Disclosure: The Sustainable Groundwater Management Act (SGMA) was passed in 2014, requiring groundwater basins to be sustainable by 2040. SGMA requires a Groundwater Sustainability Plan (GSP) by 2020. SGMA may limit the amount of well water that may be pumped from underground aquifers. Buyers and tenants to a real estate transaction should consult with their own water attorney; hydrologist; geologist; civil engineer; or other environmental professional.

Additional information is available at:
California Department of Water Resources Sustainable Groundwater Management Act Portal - <https://sgma.water.ca.gov/portal/>
Telephone Number: (916) 653-5791

Policy on cooperation:

All real estate licensees are invited to offer this property to prospective buyers. Do not offer to other agents without prior approval.