

ALTA I.D. ALMONDS

Tulare County, California

145.62± Acres

\$4,659,840
(\$32,000/Acre)

PRICE REDUCED

- Alta Irrigation District
- (4) Ag Wells
- Lies within the Dinuba Sphere of Influence



**PEARSON
REALTY**
AGRICULTURAL PROPERTIES
A Tradition in Trust Since 1919

Offices Serving The Central Valley

FRESNO

7480 N. Palm Ave, Ste 101
Fresno, CA 93711
559.432.6200

VISALIA

3447 S. Demaree Street
Visalia, CA 93277
559.732.7300

BAKERSFIELD

4900 California Ave., #210B
Bakersfield, CA 93309
661.334.2777

www.pearsonrealty.com

Exclusively Presented by:



ALTA I.D. ALMONDS

145.62± Acres
Tulare County, CA



PROPERTY LOCATION

REEDLEY

AVE 424

DINUBA

RD 92

RD 96

SUBJECT



PROPERTY INFORMATION

DESCRIPTION

This large block of Independence almonds has a fantastic water supply with 4 ag wells and full entitlement to Alta I.D. surface water from the Smith Mountain Ditch. Additionally, there is excellent residential development potential as the entire property lies within the Dinuba Sphere of Influence.

LOCATION

Located on the SEC of Avenue 424 and Road 92, Dinuba, CA.

LEGAL

Tulare County APN's: 013-080-021 & 053. Located in a portion of Section 9, T16S, R24E, M.D.B.&M.

ZONING

ARE-20 (Agricultural, Rural, Exclusive, 20 acre minimum).

PLANTINGS

Independence almonds on Viking Rootstock planted in 2018.
13' x 22' spacing

WATER

Alta Irrigation District with rights to surface water.
(4) Ag wells.

SOILS

See soils map included.

BUILDINGS

None.

PRICE/TERMS

\$4,659,840 (\$32,000/acre) all cash at close of escrow.

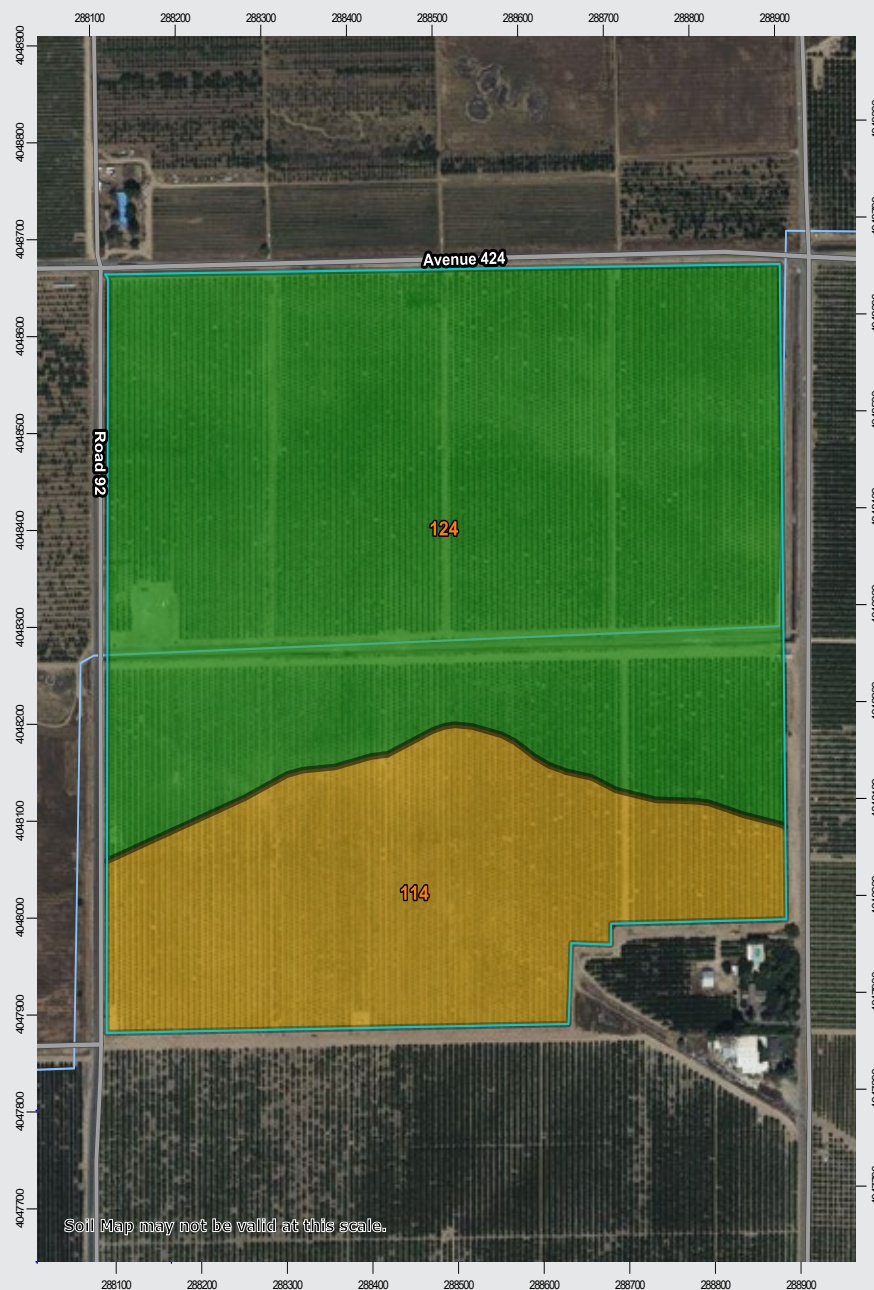


PROPERTY OVERVIEW

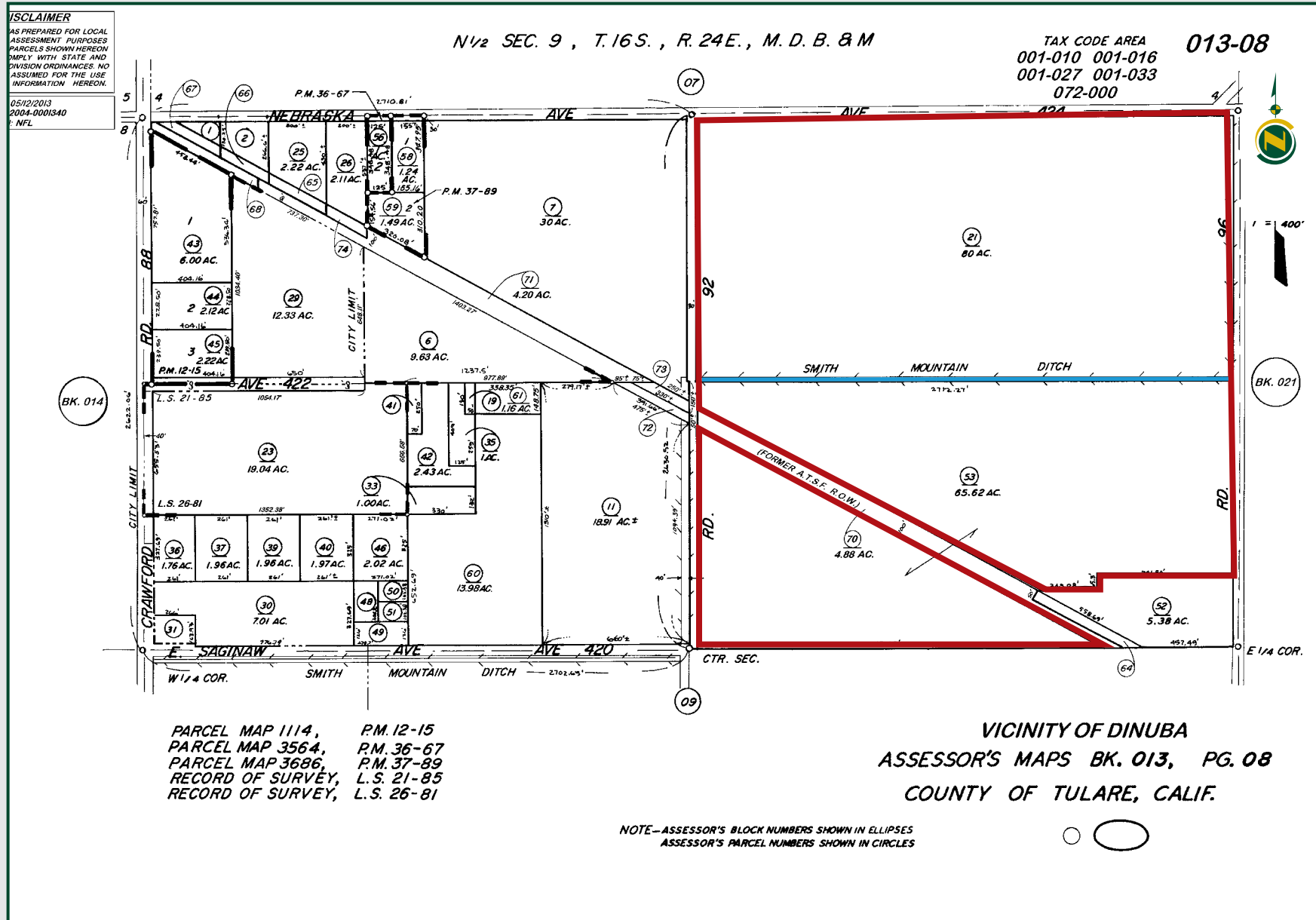


SOILS MAP

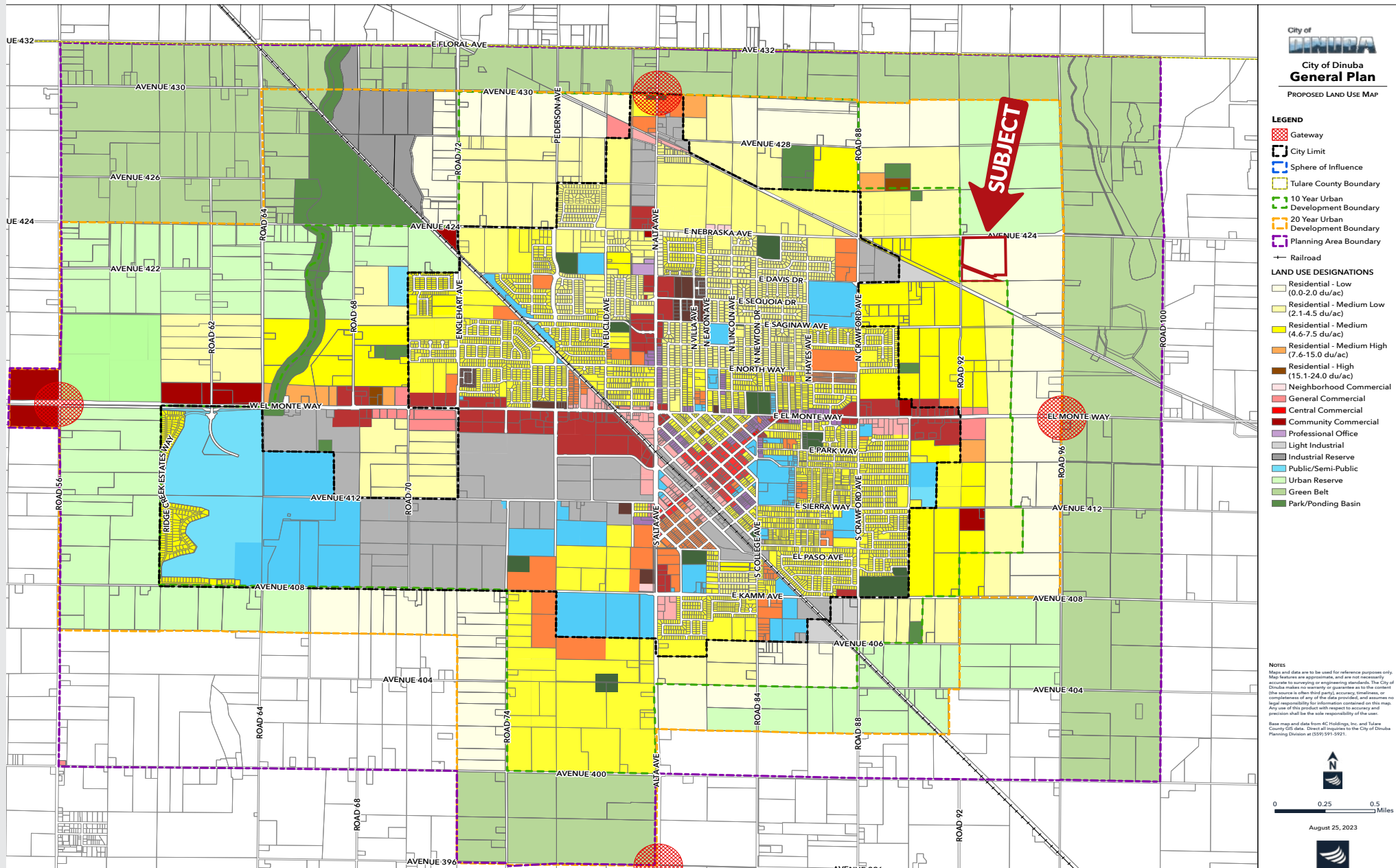
California Revised Storie Index (CA)		
Map unit symbol	Map unit name	Rating
124	Hanford sandy loam, 0-2% slopes	Grade 1 - Excellent
114	Exeter loam, 0-2% slopes	Grade 4 - Poor



PARCEL MAP



DINUBA GENERAL PLAN



ALTA I.D. ALMONDS

145.62± Acres
Tulare County, CA



Offices Serving The Central Valley

FRESNO

7480 N. Palm Ave, Ste 101
Fresno, CA 93711
559.432.6200

VISALIA

3447 S. Demaree Street
Visalia, CA 93277
559.732.7300

BAKERSFIELD

4900 California Ave., #210B
Bakersfield, CA 93309
661.334.2777



**Download Our
Mobile App!**

<http://pearsonrealty.com/mobileapp>



Download on the
App Store



GET IT ON
Google Play

Water Disclosure: The Sustainable Groundwater Management Act (SGMA) was passed in 2014, requiring groundwater basins to be sustainable by 2040. SGMA requires a Groundwater Sustainability Plan (GSP) by 2020. SGMA may limit the amount of well water that may be pumped from underground aquifers. Buyers and tenants to a real estate transaction should consult with their own water attorney; hydrologist; geologist; civil engineer; or other

environmental professional. Additional information is available at: California Department of Water Resources Sustainable Groundwater Management Act Portal - <https://sgma.water.ca.gov/portal/> Telephone Number: (916) 653-5791

Policy on cooperation: All real estate licensees are invited to offer this property to prospective buyers. Do not offer to other agents without prior approval.