

# PIEDRA ROAD OPEN LAND

.83± ACRES | FRESNO COUNTY, CALIFORNIA

**\$15,000**  
(\$18,072/ACRE)



## PROPERTY HIGHLIGHTS

- ADJACENT TO KINGS RIVER
- UNDEVELOPED LAND



www.pearsonrealty.com  
CA DRE #00020875

**FRESNO**  
7480 N. Palm Ave, Ste 101  
Fresno, CA 93711  
559.432.6200

**VISALIA**  
3447 S. Demaree St.  
Visalia, CA 93277  
559.732.7300

**BAKERSFIELD**  
4900 California Ave., #210B  
Bakersfield, CA 93309  
661.334.2777



All information contained herein is deemed reliable but not guaranteed by seller nor broker and should be independently verified by potential buyers. We assume no liability for errors or omissions.



## PROPERTY LOCATION





## PROPERTY INFORMATION

### DESCRIPTION

The property is open land that is undeveloped and not marked at this time.

### LOCATION

This property is located north of Sanger and adjacent to the Kings River approximately one mile below the Pine Flat Dam.

### LEGAL

Fresno County APN: 158-230-06 located in a portion of Section 8, T13S, R24E, M.D.B.&M.

### ZONING

RC40

### BUILDINGS/STRUCTURES

None.

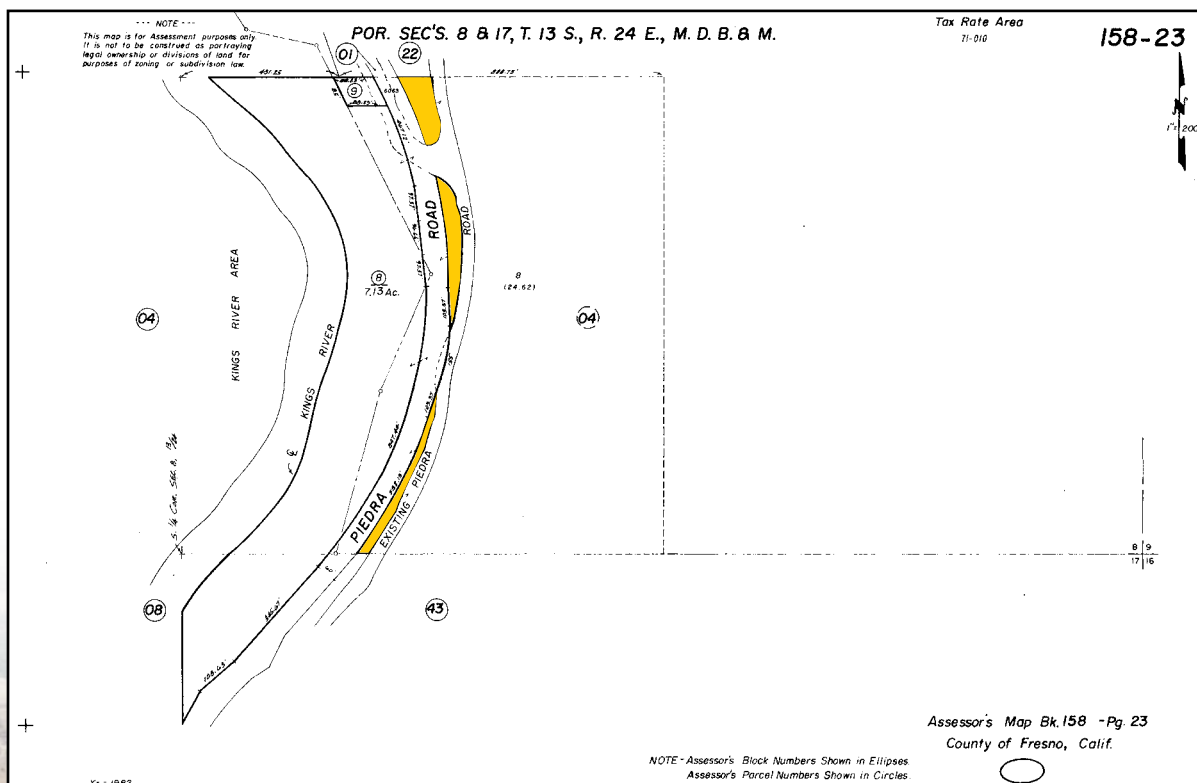
### WATER

None

### PRICE/TERMS

\$15,000 all cash at close of escrow

### APN MAP





EXCLUSIVELY PRESENTED BY:  
A DIVISION OF PEARSON COMPANIES



**106**  
YEARS

A Tradition In Trust Since 1919

## OFFICES SERVING THE CENTRAL VALLEY

### FRESNO

7480 N. Palm Ave, Ste 101  
Fresno, CA 93711  
559.432.6200

### VISALIA

3447 S. Demaree St.  
Visalia, CA 93277  
559.732.7300

### BAKERSFIELD

4900 California Ave., #210B  
Bakersfield, CA 93309  
661.334.2777

[www.pearsonrealty.com](http://www.pearsonrealty.com)

CA DRE #00020875

