

**FOR SALE**



**PEARSON  
REALTY**

AGRICULTURAL PROPERTIES  
*A Tradition in Trust Since 1919*

## **Allensworth Open Land**



**78.76± Assessed Acres  
Tulare County, California**

- Large Pistachio Acreage Nearby
- Near Highway Access

**Exclusively Presented By:  
Pearson Realty**



**CALIFORNIA'S LARGEST AG BROKERAGE FIRM**

[www.pearsonrealty.com](http://www.pearsonrealty.com)

CA BRE #00020875



# Allensworth Open Land

**78.76± Assessed Acres**

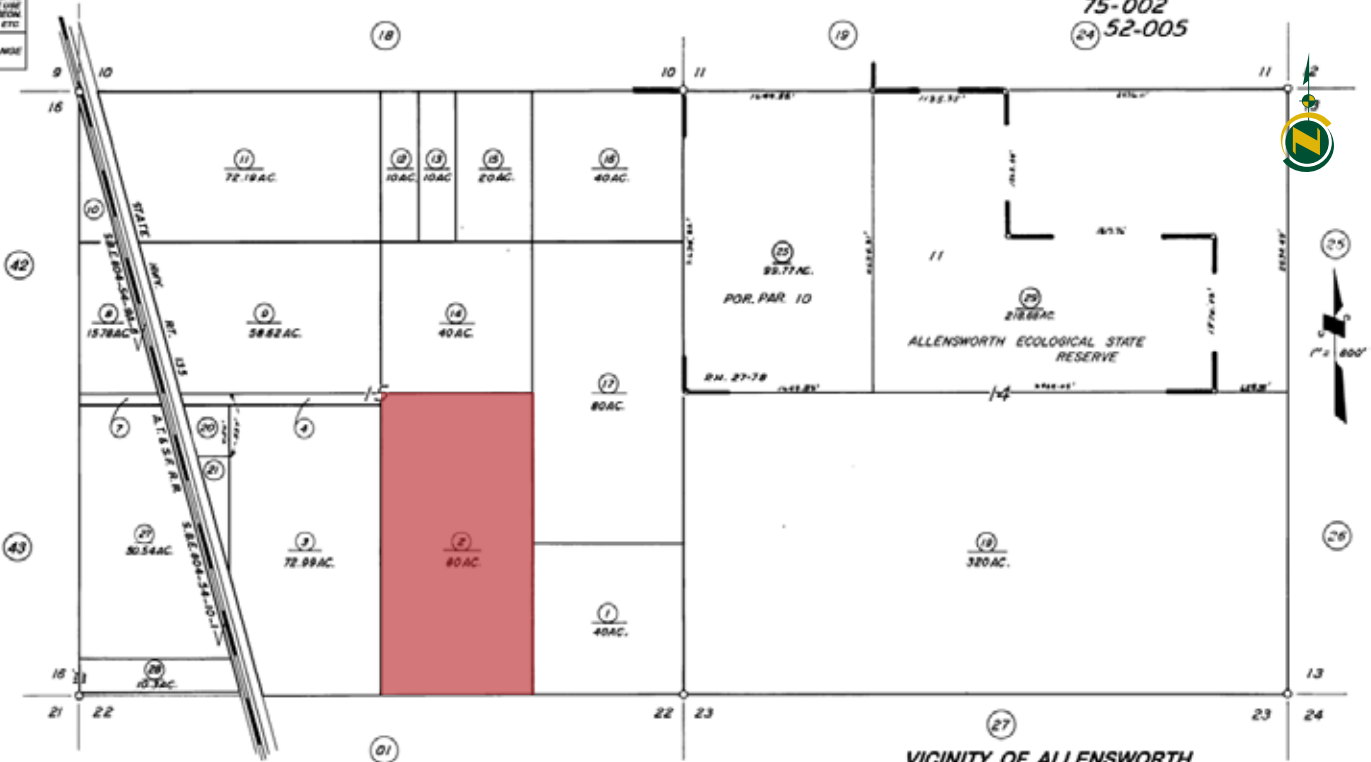
**\$360,000**

<b>DESCRIPTION:</b>	Available for sale is an open ground parcel located near highway 43 just south of Allensworth and west of Earlimart and Delano, CA. The property is located near a large acreage planted to pistachios.
<b>LOCATION:</b>	The property is located on Avenue 24 approximately ¼ mile east of Highway 43.
<b>LEGAL:</b>	Tulare County APN: 333-170-002. The property is not under the Williamson Act Contract.
<b>WATER:</b>	There is no irrigation water available. A buyer will have to drill a well or find access to water.
<b>SOILS:</b>	Predominantly Atesh-Jerryslu association, 0 to 2 percent slopes. Gareck-Garces association, 0 to 2 percent slopes.
<b>PRICE/TERMS:</b>	The asking price is \$360,000 cash.

# ASSESSOR'S PARCEL MAP

ONLY THE PARCELS SHOWN HEREON  
MAY NOT COMPLY WITH STATE AND  
LOCAL SUBDIVISION ORDINANCES. NO  
LIABILITY IS ASSUMED FOR THE USE  
OF THE INFORMATION HEREON  
S.B.P. CODE SEC. 85C, 498.4, ETC.  
REVISED: 02/28/2017  
REASON: MAPPING CHANGE  
CAD TECH: NFL

52-003  
75-002  
24 52-005



POR. PARCEL MAP 2677, P.M. 27-78

VICINITY OF ALLENSWORTH  
ASSESSOR'S MAPS BK. 333, PG. 17  
COUNTY OF TULARE, CALIF.

NOTE - ASSESSOR'S BLOCK NUMBERS SHOWN IN ELLIPSES  
ASSESSOR'S PARCEL NUMBERS SHOWN IN CIRCLES

# AERIAL MAP





# LOCATION MAP



# REGIONAL MAP



We believe the information contained herein to be correct. It is obtained from sources which we regard as reliable, but we assume no liability for errors or omissions. Policy on cooperation: All real estate licensees are invited to offer this property to prospective buyers. Do not offer to other agents without prior approval.

## Offices Serving The Central Valley

**FRESNO**  
7480 N Palm Ave, Ste 101  
Fresno, CA 93711  
559.432.6200

**VISALIA**  
3447 S Demaree Street  
Visalia, CA 93277  
559.732.7300

**BAKERSFIELD**  
1801 Oak Street, Ste 159  
Bakersfield, CA 93301  
661.334.2777



**Download Our Mobile App!**

<http://snap.vu/oueq>

